

**MANUTENZIONE STRAORDINARIA
DI ALCUNE VIE CITTADINE**

**RILIEVO FOTOGRAFICO
Tavola 04**

PROGETTO ESECUTIVO

Progettisti

Geom. Angelo Amabili



Geom. Romeo Capriotti



Geom. Antonio Palestini



**Responsabile Unico
del Procedimento**

Geom. Romeo Capriotti



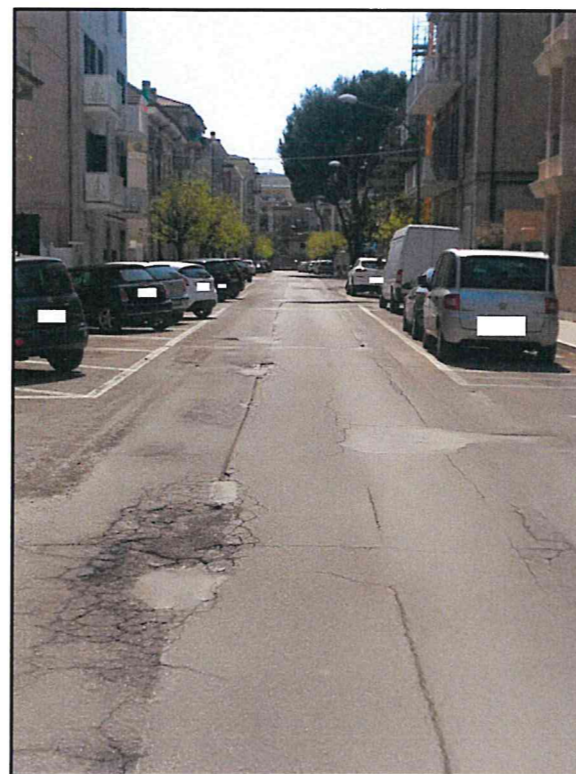
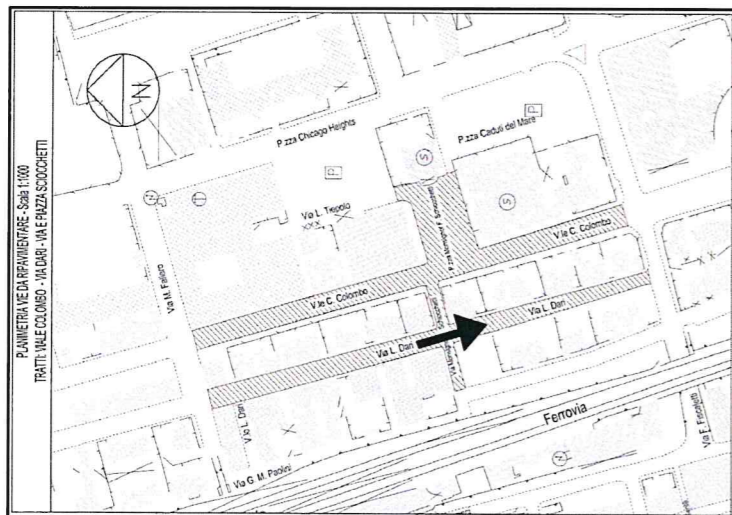
Il Dirigente

Dott. Arch. Annalisa Sinatra



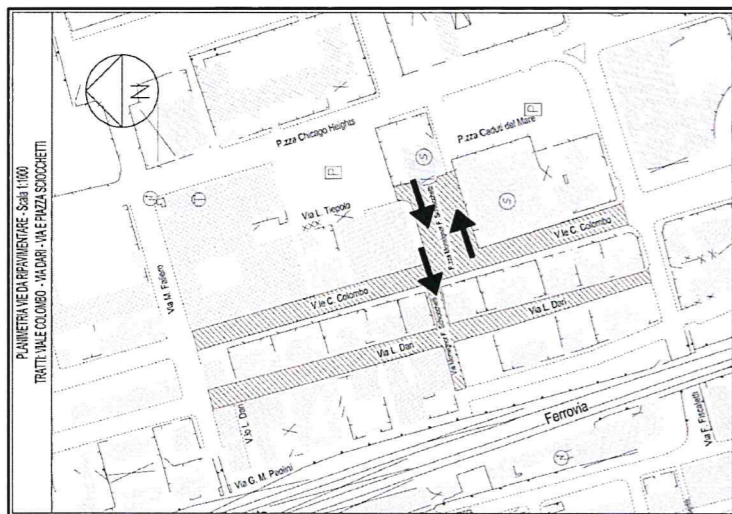
TAV.2 - VIA DARI

➔ VERSO DEL RILIEVO FOTOGRAFICO



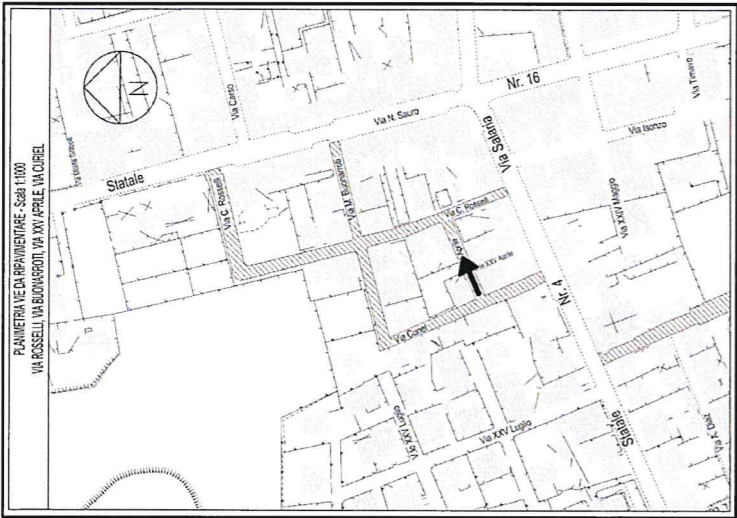
TAV.3 - PIAZZA E VIA SCIOCCHETTI

→ VERSO DEL RILIEVO FOTOGRAFICO



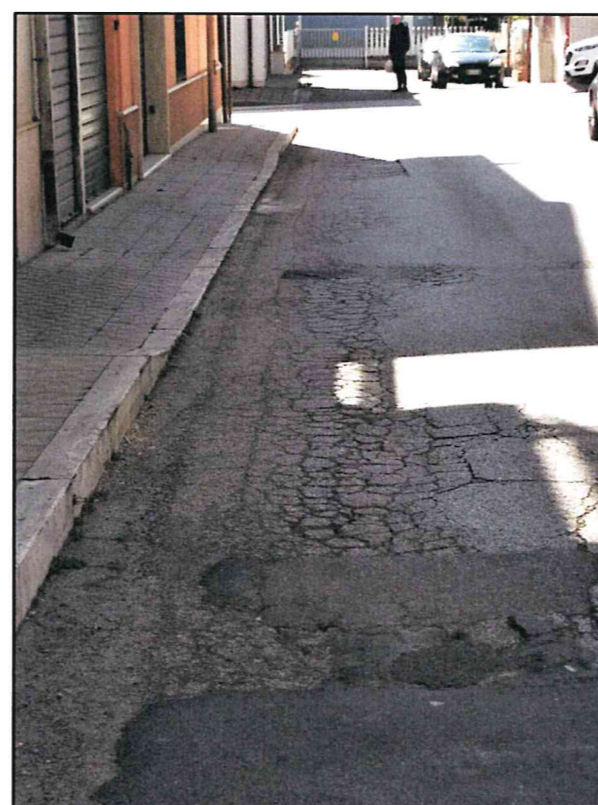
TAV.6 - VIA XXV APRILE

➔ VERSO DEL RILIEVO
FOTOGRAFICO



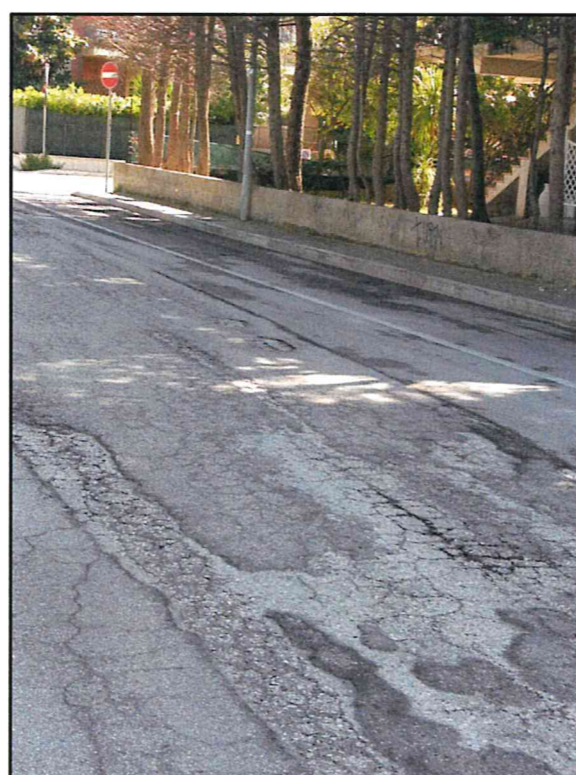
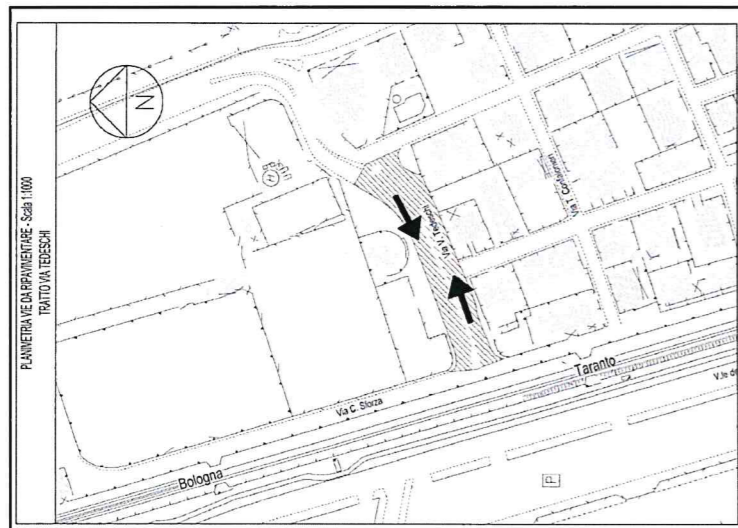
TAV.7 - VIA CURIEL

➔ VERSO DEL RILIEVO
FOTOGRAFICO



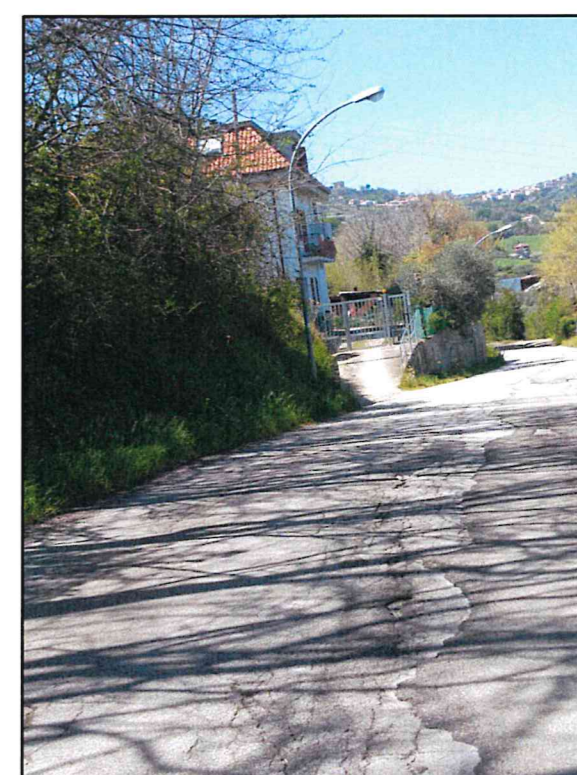
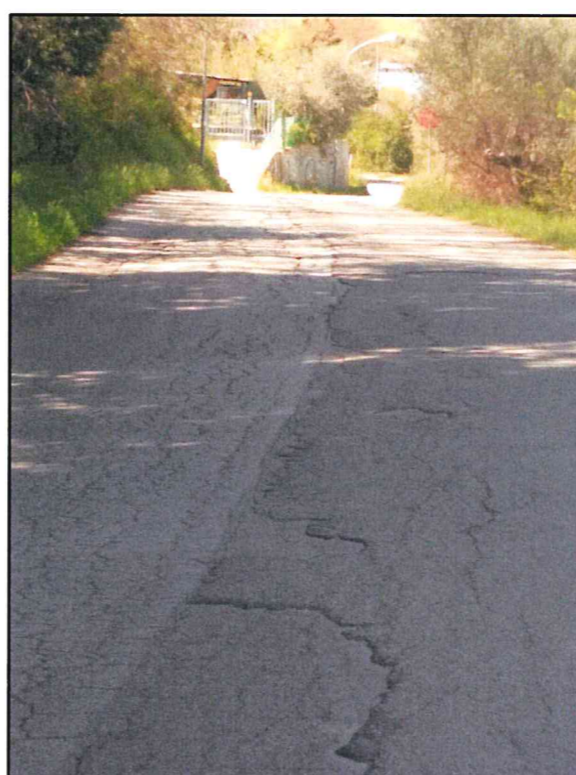
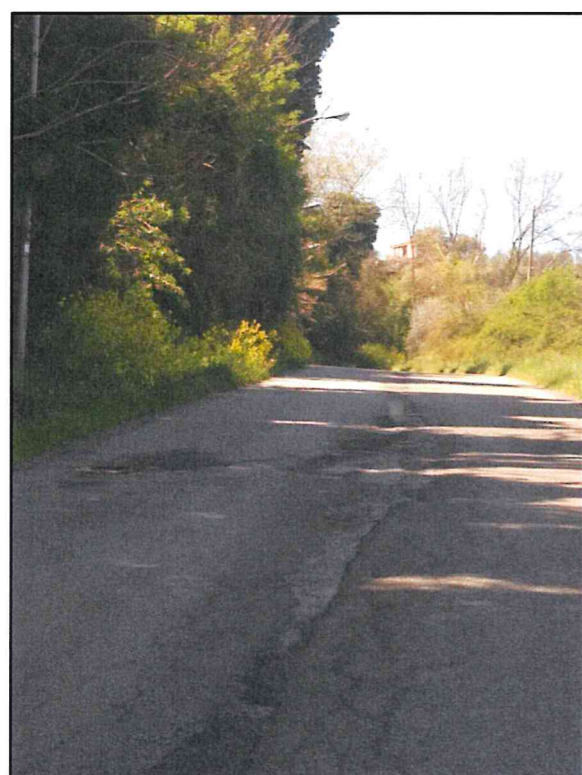
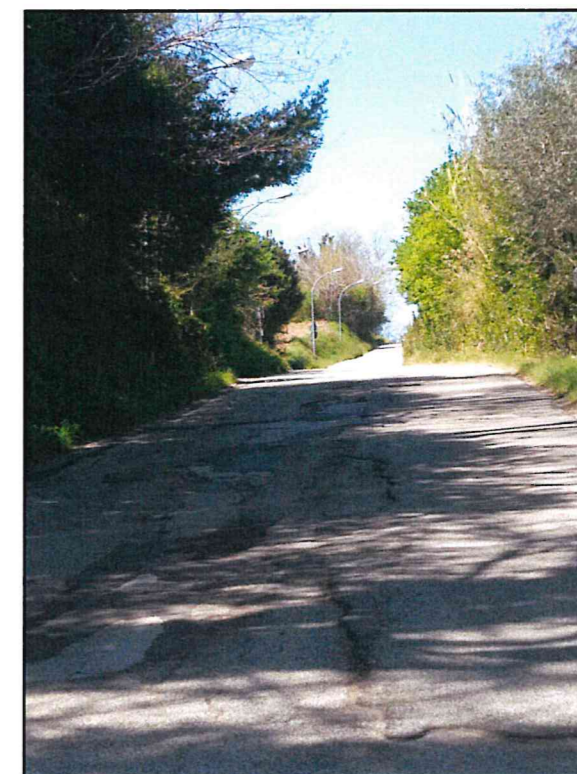
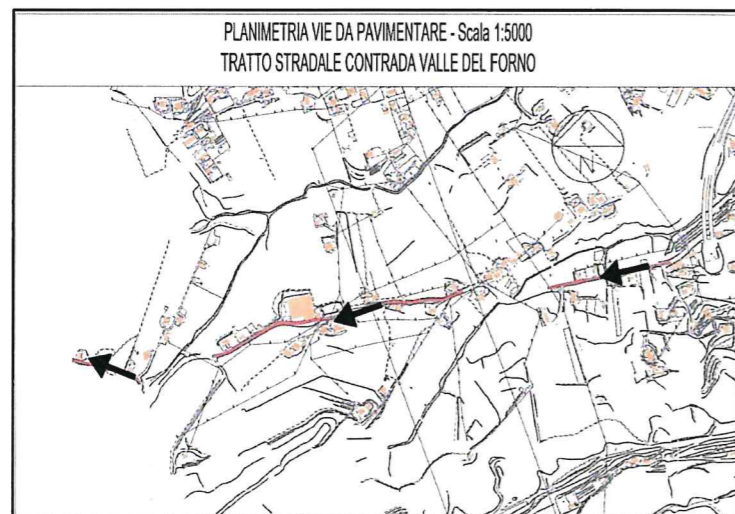
TAV.8 - VIA TEDESCHI

→ VERSO DEL RILIEVO FOTOGRAFICO



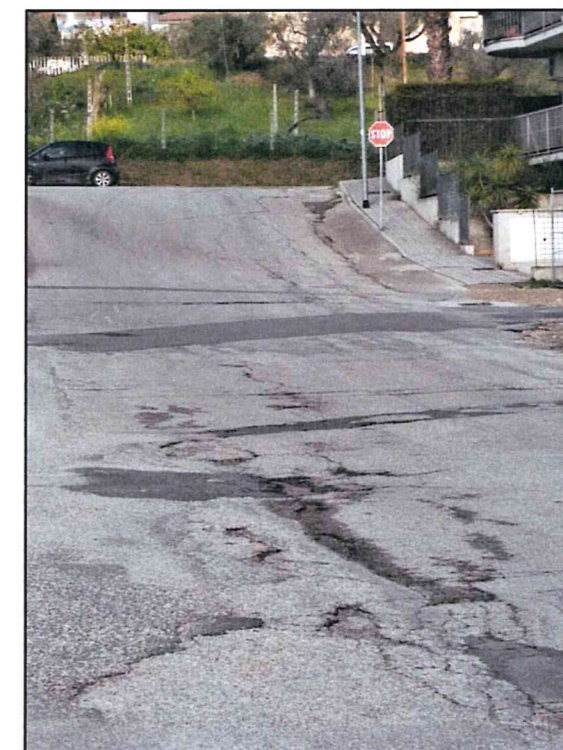
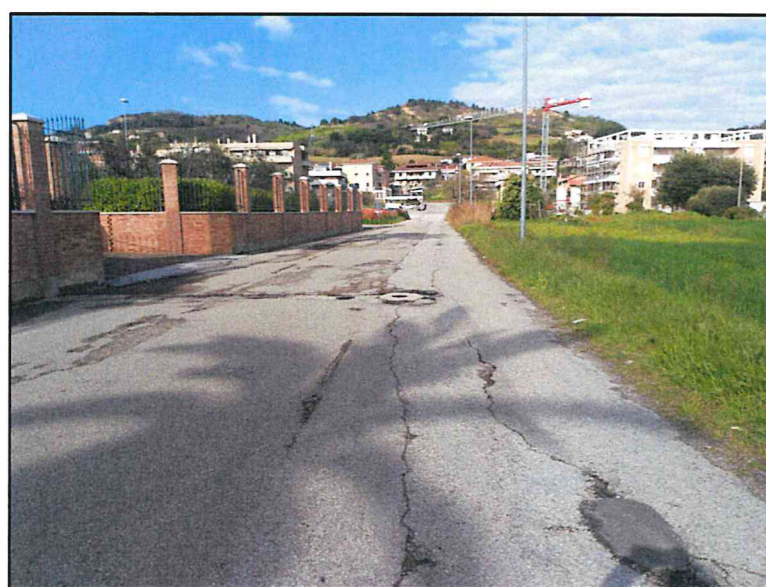
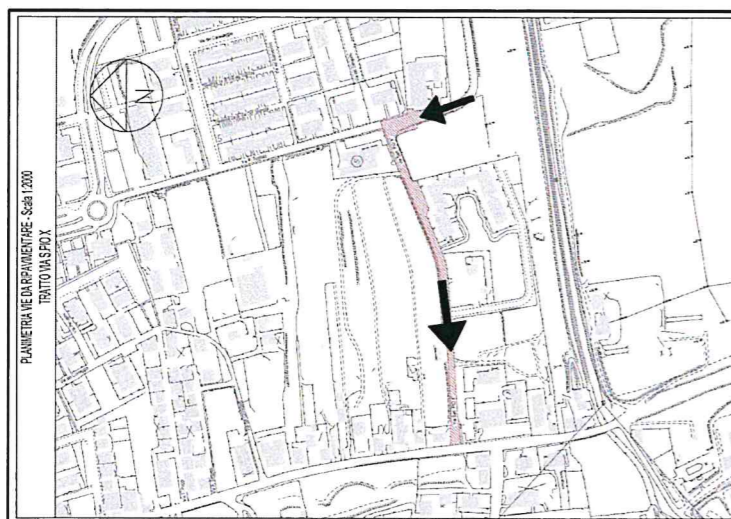
TAV.10 - VIA VALLE DEL FORNO

→ VERSO DEL RILIEVO
FOTOGRAFICO



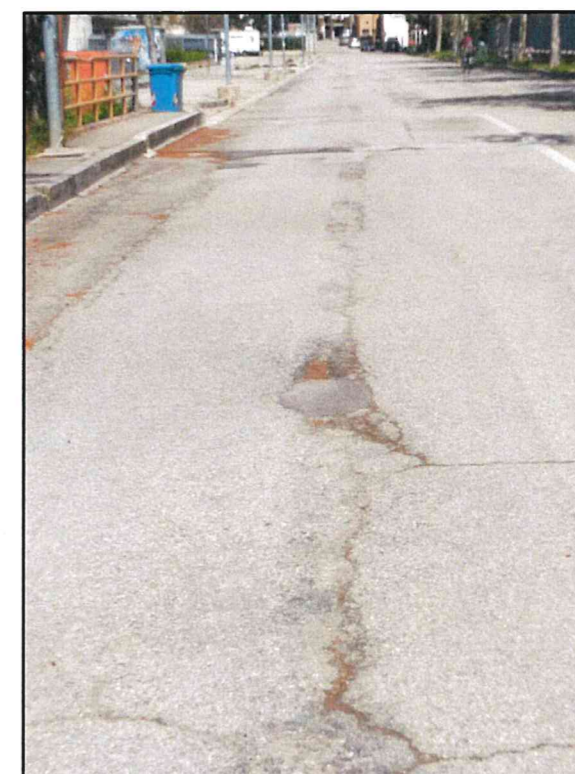
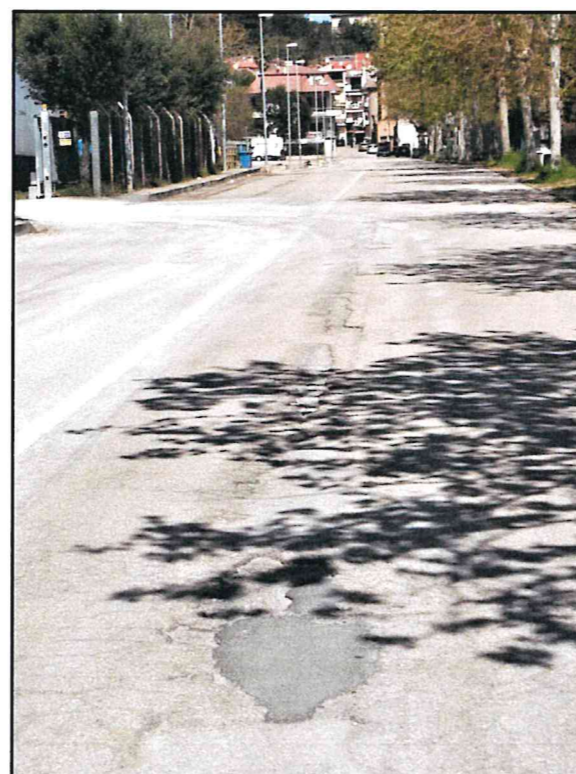
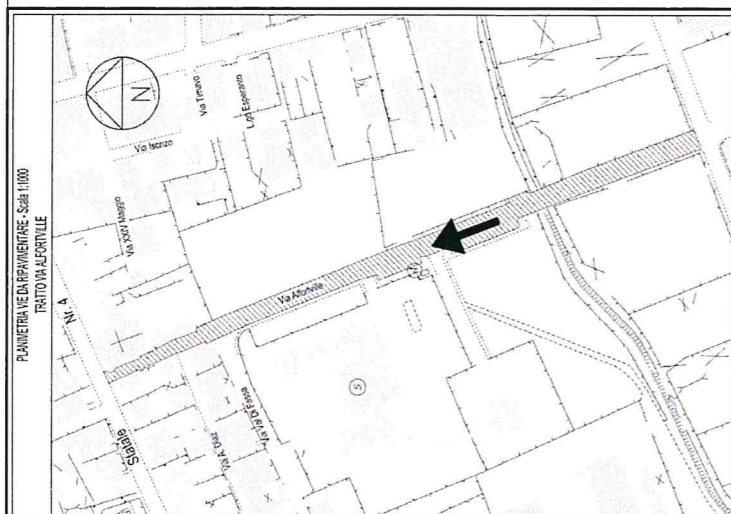
TAV.11 - VIA S. PIO X

➔ VERSO DEL RILIEVO
FOTOGRAFICO



TAV. 12 - VIA ALFORTVILLE

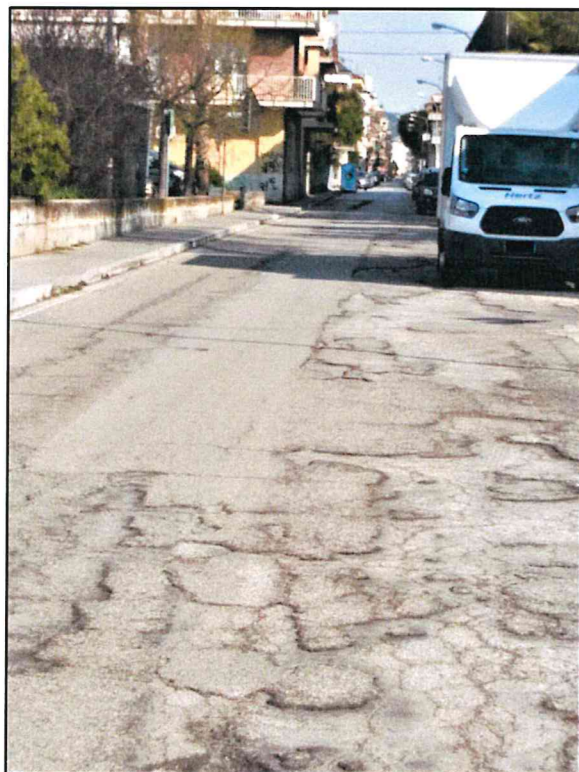
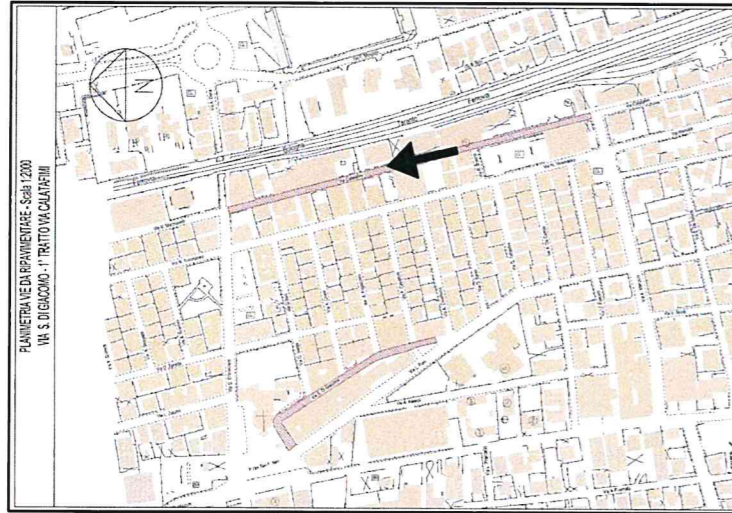
➔ VERSO DEL RILIEVO
FOTOGRAFICO



TAV.14a VIA CALATAFIMI

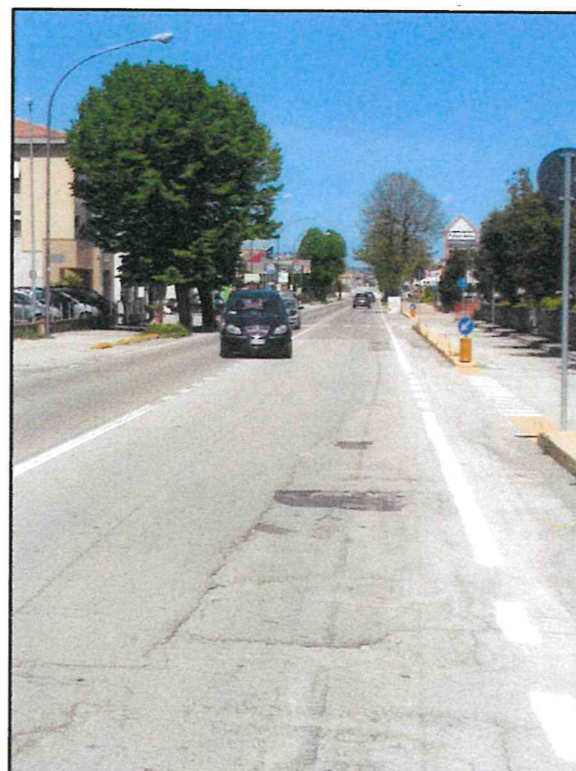
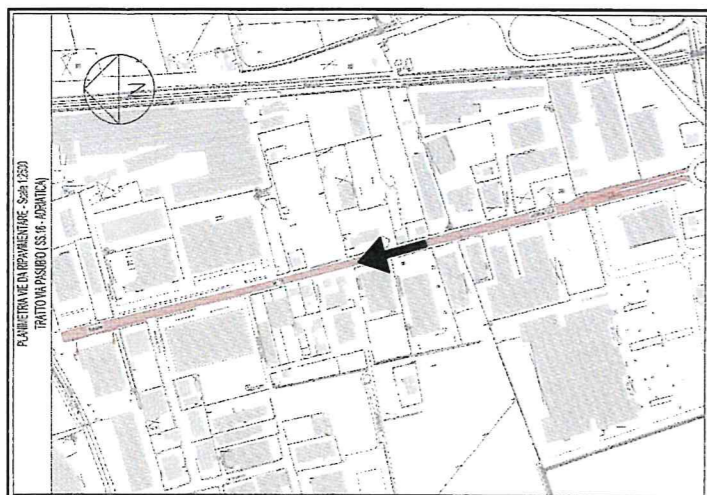
(I tranche)

➔ VERSO DEL RILIEVO
FOTOGRAFICO



TAV.15 - VIA PASUBIO

→ VERSO DEL RILIEVO
FOTOGRAFICO



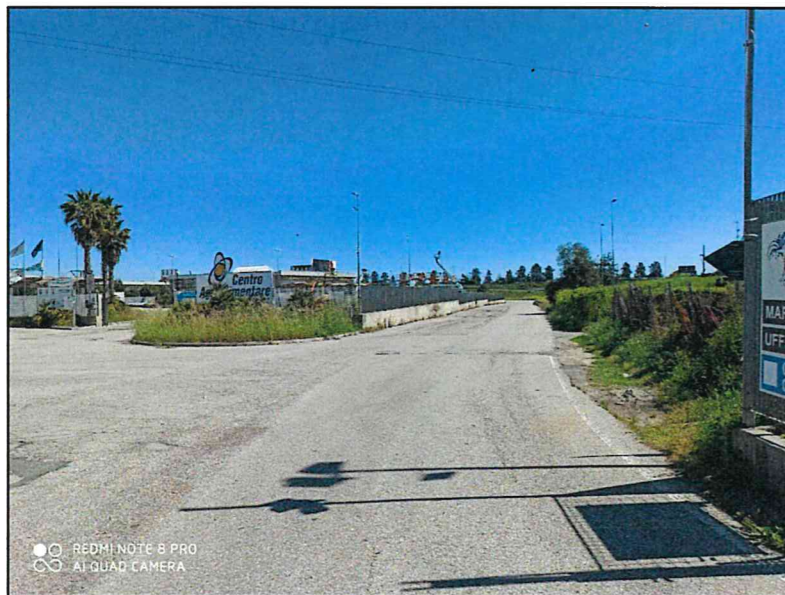
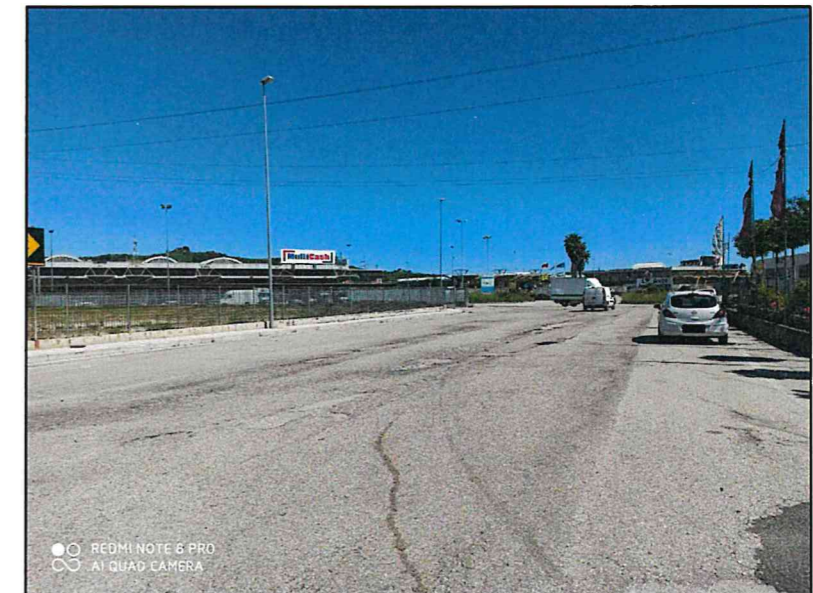
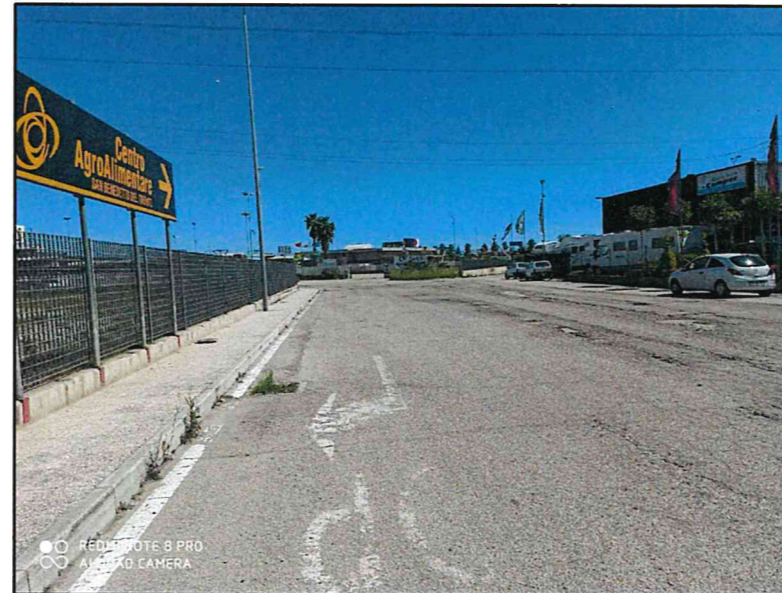
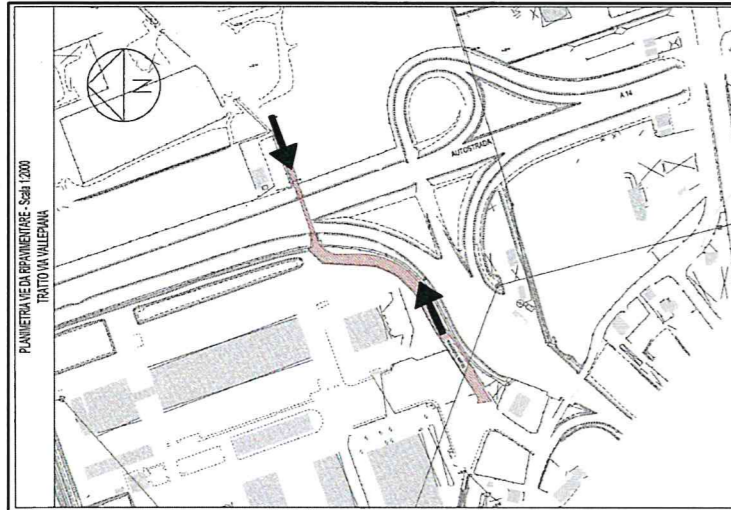
TAV.16 - VIA GABRIELLI

→ VERSO DEL RILIEVO FOTOGRAFICO



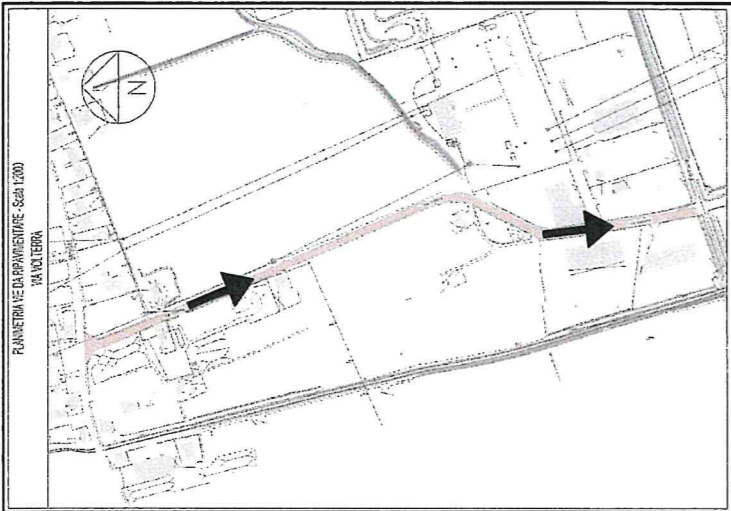
TAV.17 - VIA VALLE PIANA

➔ VERSO DEL RILIEVO FOTOGRAFICO



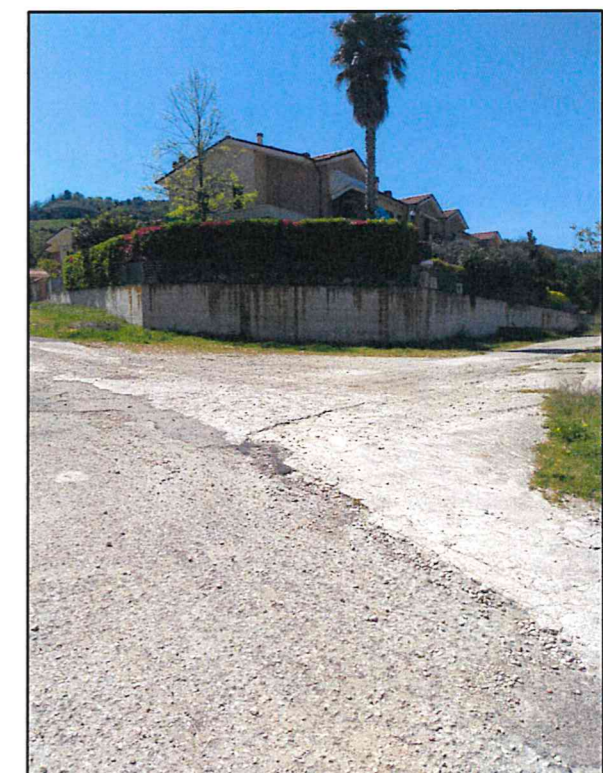
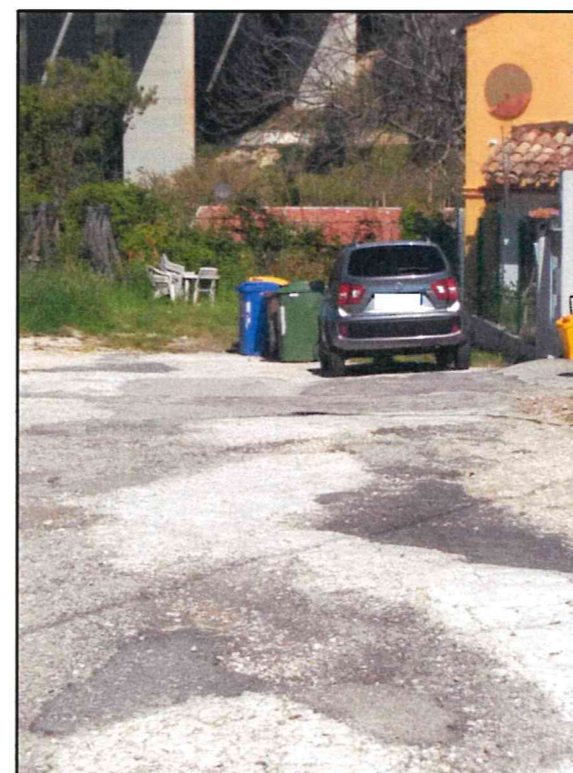
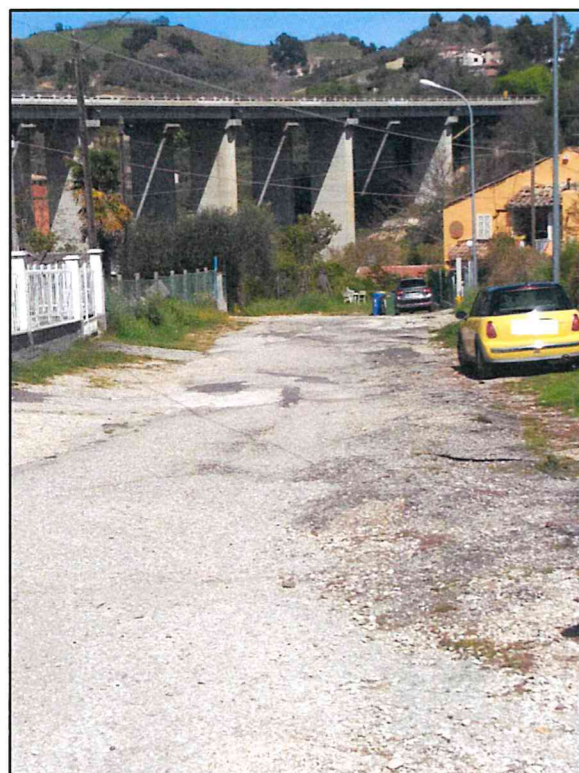
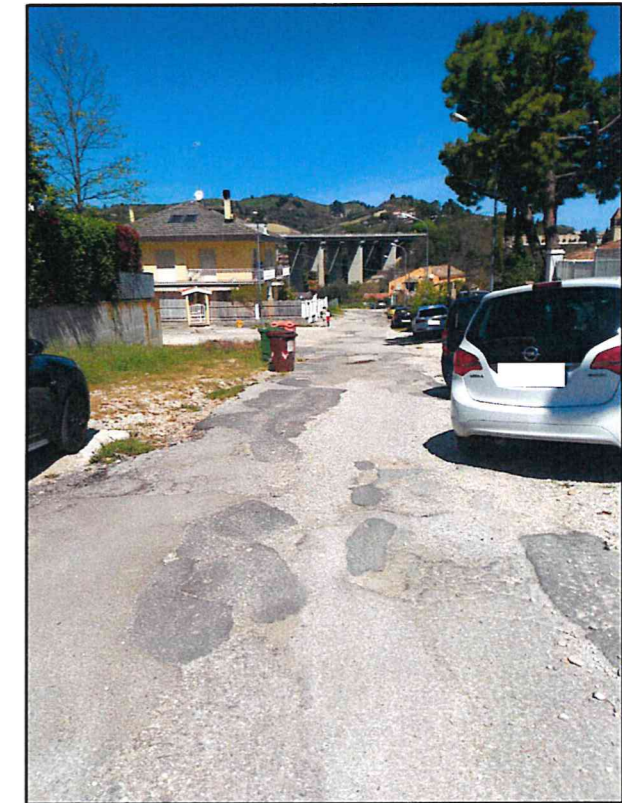
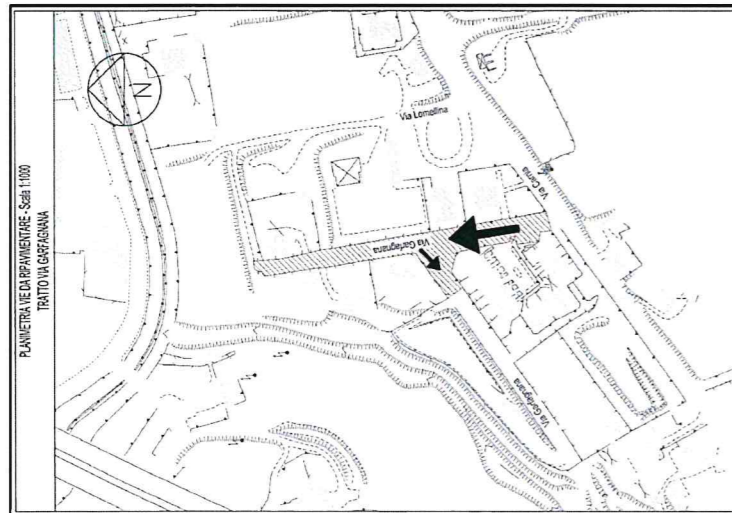
TAV.18 - VIA VOLTERRA

→ VERSO DEL RILIEVO FOTOGRAFICO



TAV.19 - VIA GARFAGNANA

➔ VERSO DEL RILIEVO
FOTOGRAFICO



TAV.20 - VIA S. DI GIACOMO

➔ VERSO DEL RILIEVO
FOTOGRAFICO

