

ALLEGATO  
delib. CC n. 100  
del 18/12/2014

SETTORE PROGETTAZIONE E MANUTENZIONE OPERE PUBBLICHE  
VIALE DE GASPERI, 120 - TEL. 0735/794330 - FAX. 0735/794309 - CODICE FISCALE E PARTITA IVA 00360140446

**PROGETTO PRELIMINARE IN VARIANTE AL P.R.G. PER LA  
REALIZZAZIONE DEL "CENTRO SPORTIVO ELONORA" IN  
LOCALITA' PORTO D'ASCOLI AI SENSI ART.19 DPR  
327/2001-ADOZIONE VARIANTE PARZIALE AL PRG**

San Benedetto del Tronto, li  
DICEMBRE 2014

**VARIANTE URBANISTICA**

Scala

Aggiornamento

**PIANTE-PROSPETTI-SEZIONE  
ATTREZZATURE SPORTIVE**

Elaborato  
**3**

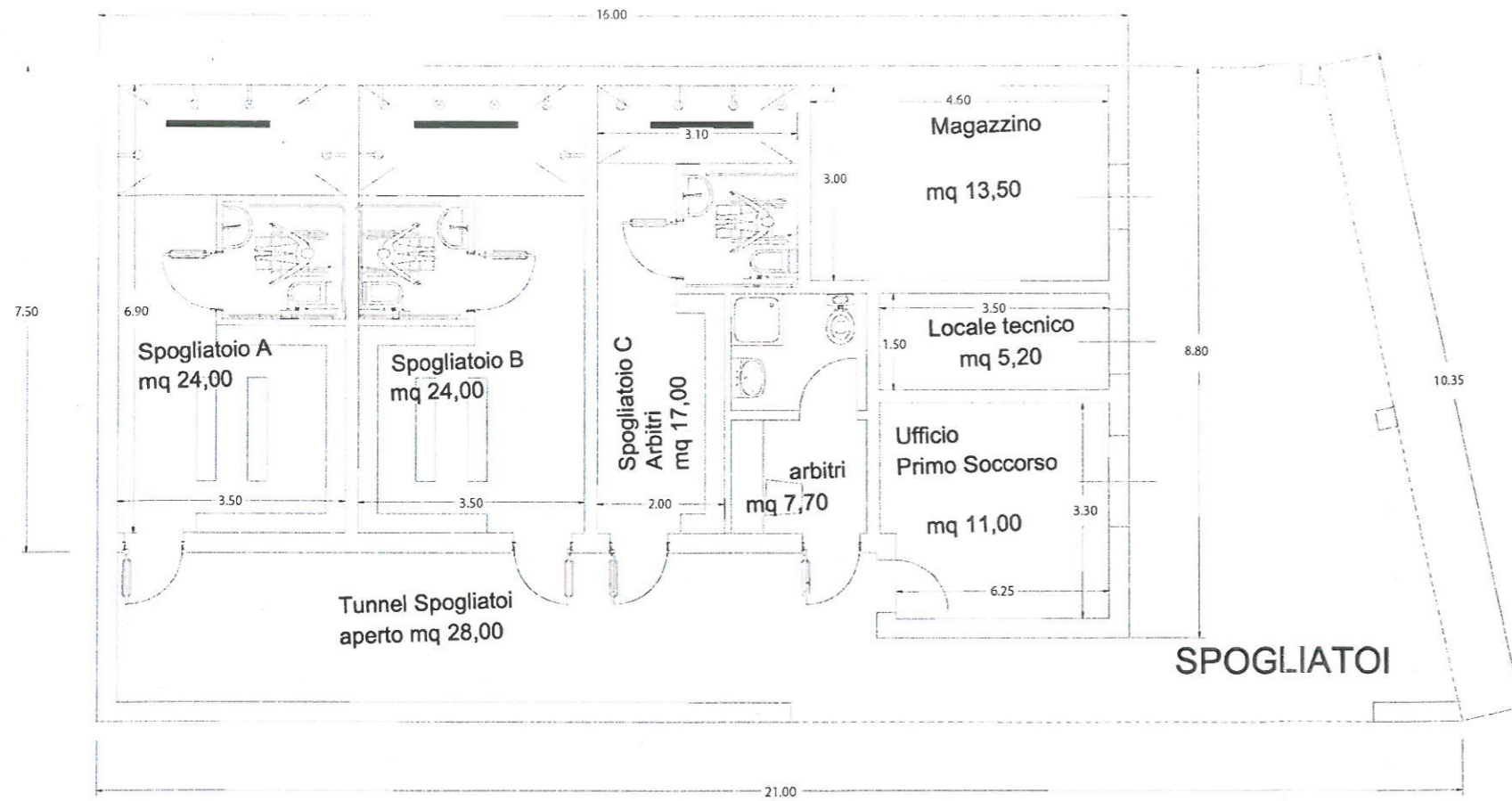


Il Progettista  
Dot. Arch. Farnush Davarpanah

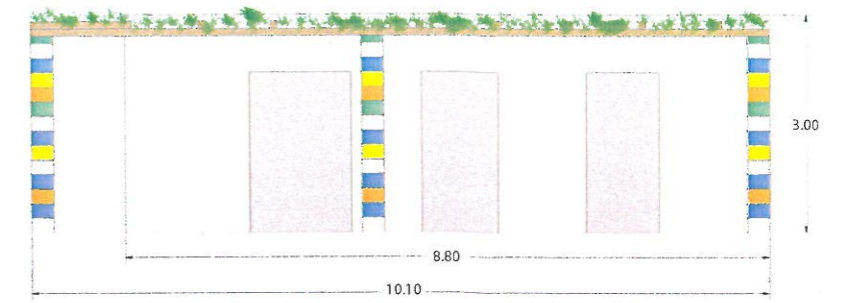
Il R.U.P.  
Dot. Arch. Annalisa Sinatra



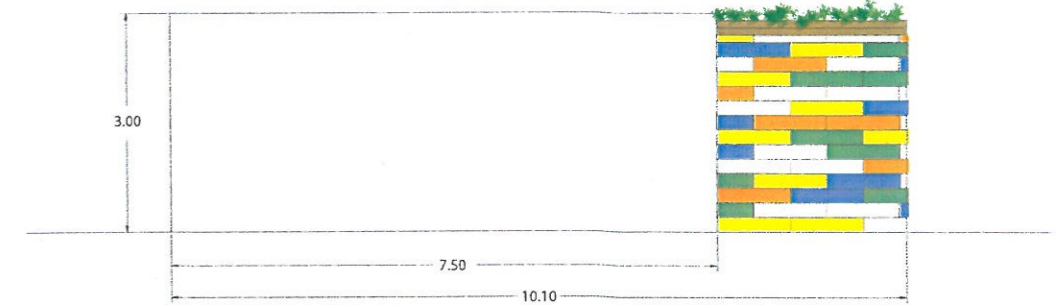
Il Dirigente  
Arch. Farnush Davarpanah



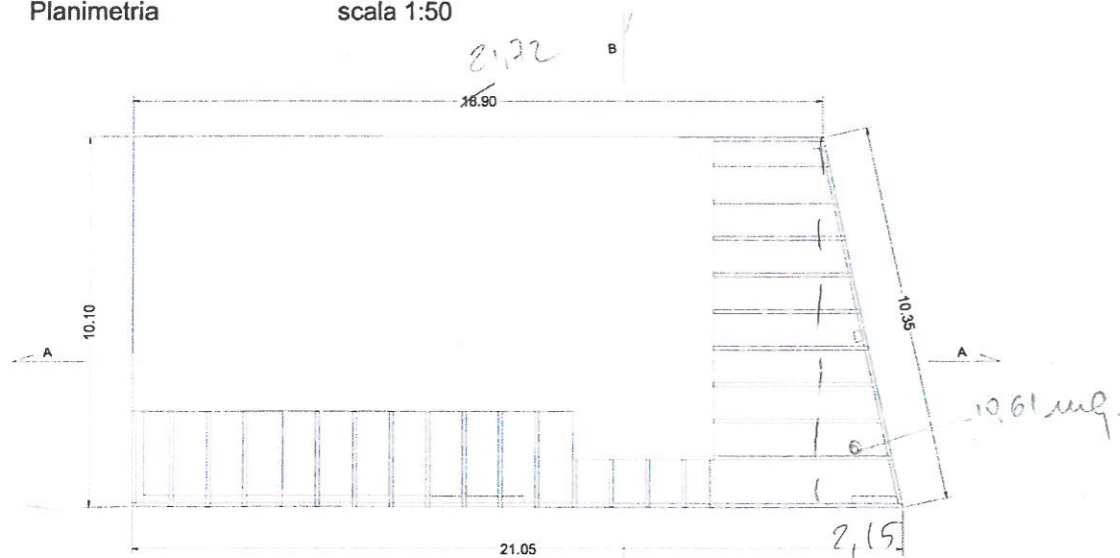
Planimetria scala 1:50



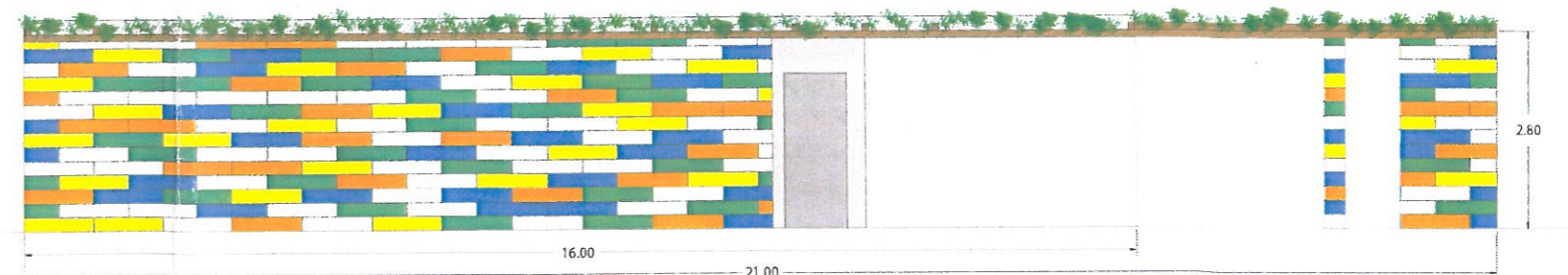
Prospetto Est scala 1:50



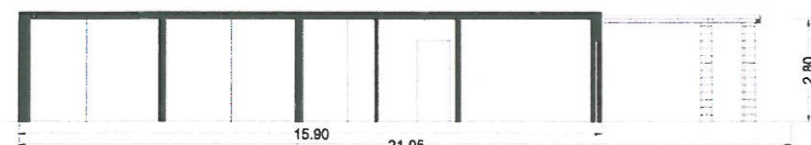
Prospetto Ovest scala 1:50



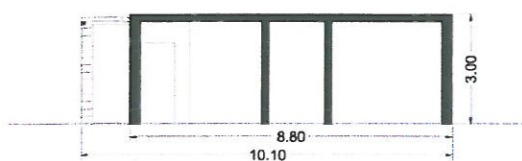
Pianta copertura scala 1:100



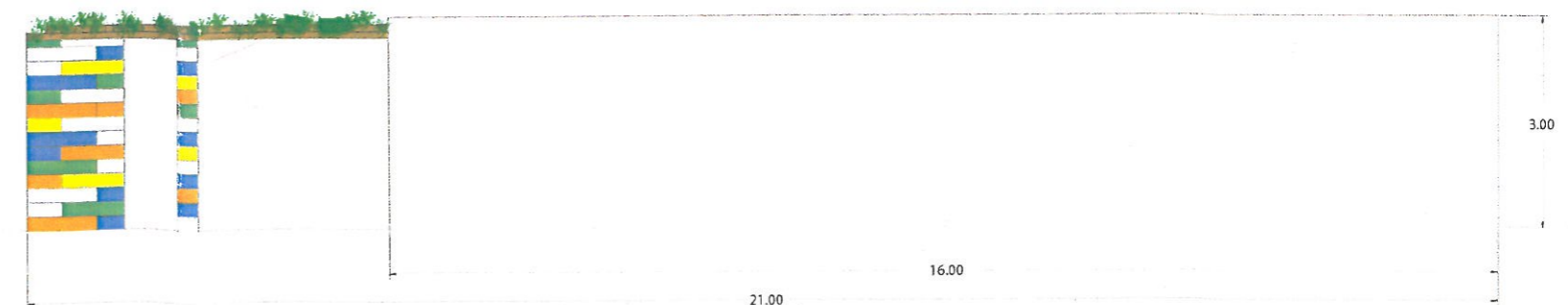
Prospetto Sud scala 1:50



Sezione Longitudinale scala 1:100

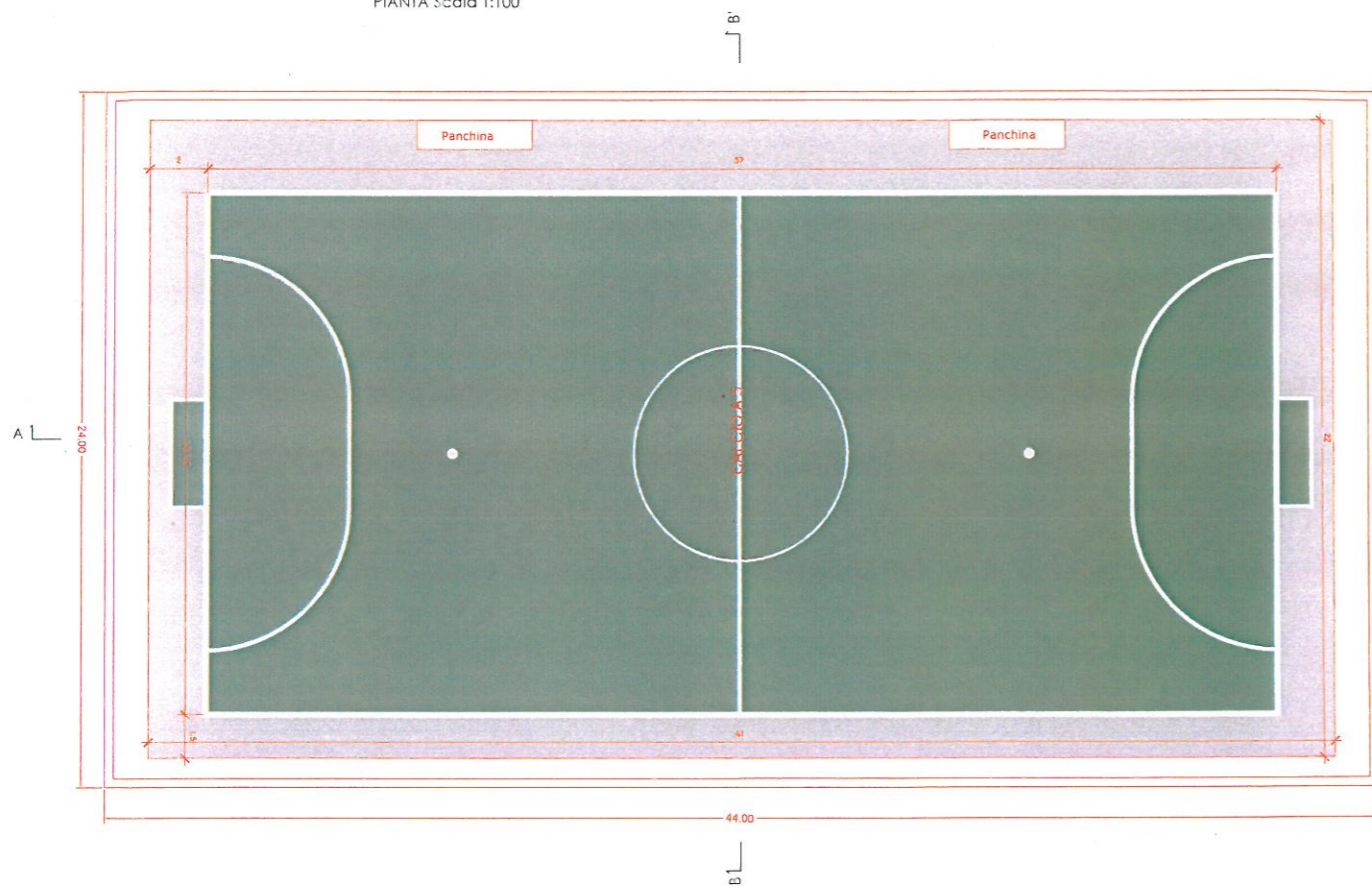


Sezione Trasversale scala 1:100

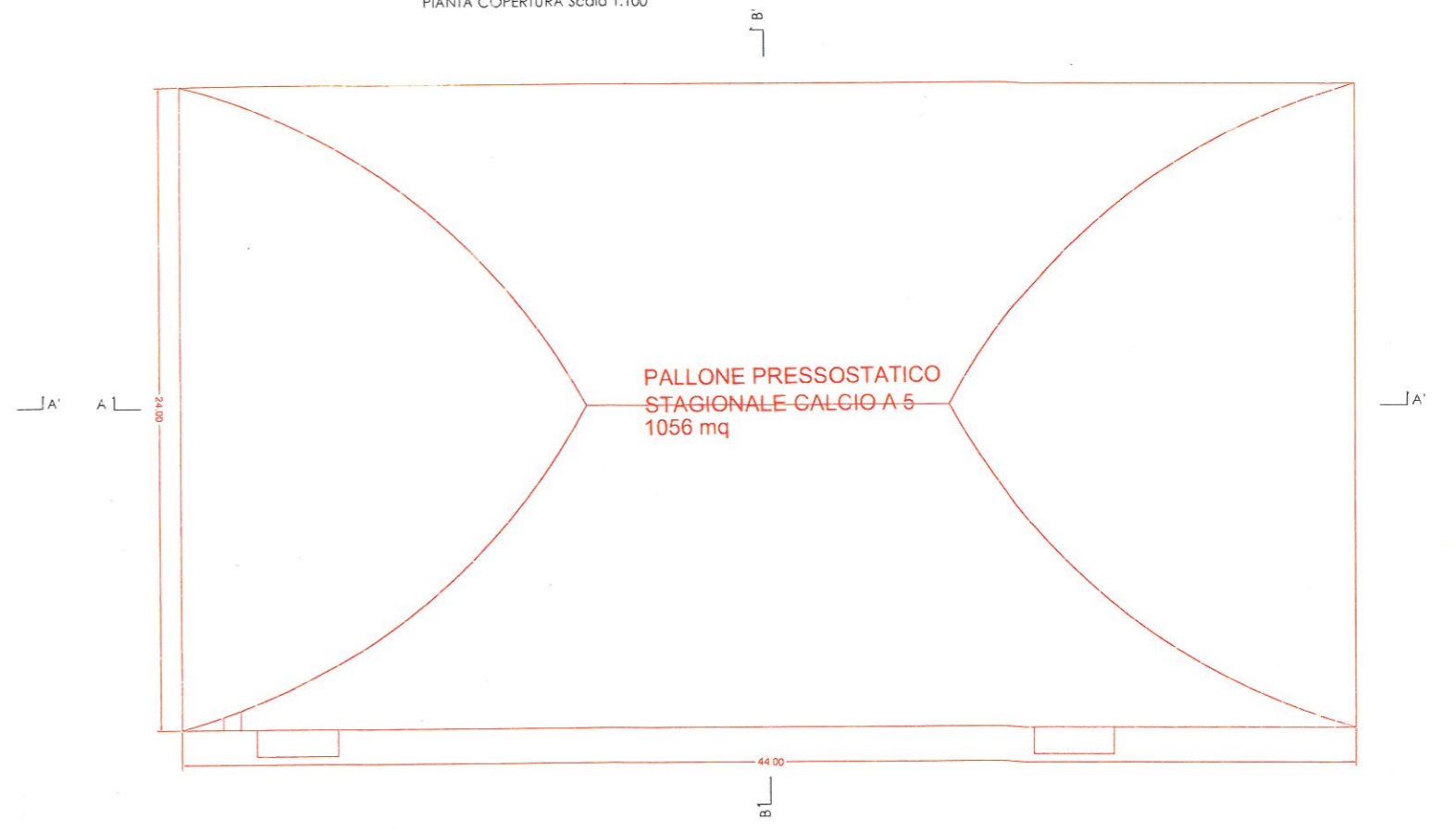


Prospetto Nord scala 1:50

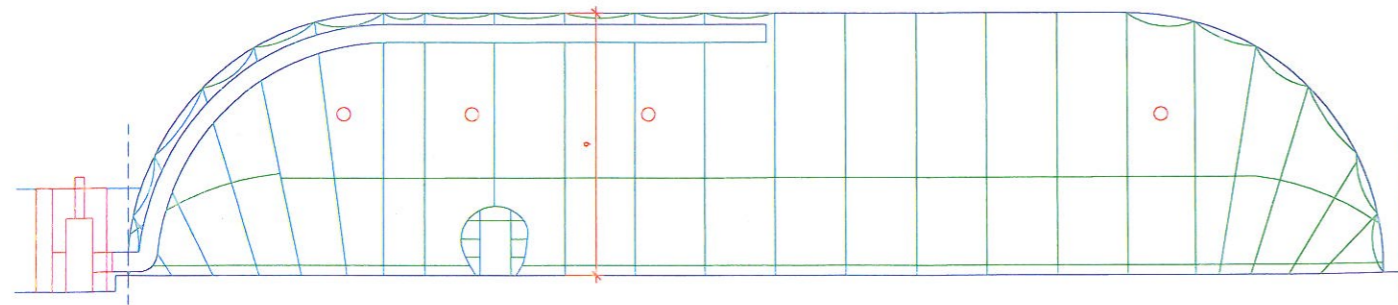
PIANTA Scala 1:100



PIANTA COPERTURA Scala 1:100



SEZIONE A-A' Scala 1:100



SEZIONE B-B' Scala 1:100

